



**YOUR BUSINESS PARTNER**  
IN MINING AND PROCESS SOLUTIONS

*Conveyor Projects*

[www.ManhattanCorp.com](http://www.ManhattanCorp.com)

## Typical Scope of Supply

---

- Design, Manufacture, Supply & Installation of Customized Conveyor Systems
- 

- Drive size, drive arrangement & take up design
  - Structural analysis & support trestle design
  - Design of feed & discharge chutes
- 

## Refurbishment Options

- Re-engineering & modifications

## Applications

- Box or stringer conveyor structures
- Overland or Plant Infrastructure
- Underground pipe or channel steel structures - floor mounted or roof slung
- Stacker conveyors: permanent or mobile allowing for loft & slewing motions
- Bucket elevators
- Pipe & Screw conveyors

**YOUR BUSINESS PARTNER** IN MINING AND PROCESS SOLUTIONS





# Conveyor Projects Ref:58212

System Capacity 1200 tph

- 1x Radial Stacker, 270 degrees slew, 1200mm x 42m long
  - 1x Conveyor 2 (Overland): 1200 t/h; 1200mm x 184m long
  - 1x Conveyor 3 (Garland): 600 t/h; 1200mm x 74m long
  - 1x Conveyor 4 (Garland): 600 t/h; 1200mm x 100m long
  - 1x 1500 TPH Feeder Breaker
- 
- Radial Stacker - Unique Center drive to reduce overhanging head weight



**YOUR BUSINESS PARTNER** IN MINING AND PROCESS SOLUTIONS



# Conveyor Projects Ref:61711

- Capacity: 300 tph
- Product: Coal
- Lump size: 40mm maximum
- Length: 33m
- Height: 4-10m  
hydraulically adjustable
- Fed by: FEL
- Width: 900mm
- Belt Speed: 2m/s
- Drive: 2 x 7.5kW shaft  
mounted helical/bevel motor  
gearbox with integral  
holdback
- Mobility: Conveyor is  
mounted on pneumatic  
wheels and fitted with tail  
tow hitch



**YOUR BUSINESS PARTNER** IN MINING AND PROCESS SOLUTIONS



# Conveyor Projects Ref:83625

## Overland Ash Dump Modular Conveyor System

- Capacity: 1000 tph
- Length of conveyor 700m
- CO2 Welding: + 10kms
- Steel Material: +250t
- Sand Blasting & Painting:  
+4000m<sup>2</sup>



**YOUR BUSINESS PARTNER** IN MINING AND PROCESS SOLUTIONS



# Conveyor Projects Ref:62743

## Stockpile Conveyor

- 400 tph
- 27m x 1200mm
- Feeder Conveyor, hopper & chute



**DETAIL B**  
SCALE 1 : 25

BOLT LIST		
DESCRIPTION	MATERIAL	QTY
BOLTS M16x40	GRADE 8.8	65
NUTS M16	GRADE 8.8	65
WASHERS M16	C.Q.M.S	130
BOLTS M12 x 35	GRADE 8.8	50
NUTS M12	GRADE 8.8	50
WASHERS M12	C.Q.M.S	100

**DETAIL A**  
SCALE 1 : 20

ITEM NO.	PART NUMBER	DESCRIPTION	Material	QTY	Weight	SHEETING	CUTTINGS LIST
2.1	12-003-03-02-01-1	CONV SIDE PANNEL LIGHT WEIGHT	AS PER PARTS LIST	1	308	12-003-03-03-01-1	AS PER DRAWING
2.2	12-003-03-02-01-2	CONV SIDE PANNEL LIGHT WEIGHT	AS PER PARTS LIST	1	308	12-003-03-03-01-2	AS PER DRAWING
2.3	12-003-03-02-001	CHANNEL C152x76	350WA	2	26.9		1508 LG
2.4	12-003-03-02-002	CHANNEL C100x40	350WA	6	16.8		1508 LG
2.5	12-003-03-02-003	ANGLE 50x50x6	C.Q.M.S	16	8.7		1508 LG
2.6	12-003-03-02-004	ANGLE 60x60x8	C.Q.M.S	2	9.9		1468 LG
2.7	12-003-03-02-005	ANGLE 50x50x6	C.Q.M.S	10	3.6		800 LG
2.8	12-003-03-02-006	FLAT BAR 100x6	C.Q.M.S	5	1.1		300 LG
2.9	12-003-03-02-007	PLATE 6mm	C.Q.M.S	4	1.35		200x500
2.10	12-003-03-02-009	PLATE 10mm	300WA	4	0.29		80x80
2.11	12-003-03-02-011	PLATE 12mm	350WA	2	1.86		230x120
2.12	12-003-03-02-012	CHANNEL C152x76	350WA	2	26.9		1508 LG
2.13	12-003-03-02-013	PLATE 12mm	350WA	4	3.67		250x250
2.14	12-003-03-02-010	FLAT BAR 70x8	C.Q.M.S	2	2.57		400 LG
2.15	12-003-03-02-014-1	CHANNEL C152x76	350WA	1	23.4		1478 LG
2.16	12-003-03-02-014-2	CHANNEL C152x76	350WA	1	23.4		1478 LG
2.17	12-003-03-02-015-1	CHANNEL C152x76	350WA	1	24.3		1508 LG
2.18	12-003-03-02-015-2	CHANNEL C152x76	350WA	1	24.3		1508 LG
2.19	12-003-03-02-016-1	CHANNEL C100x40	350WA	1	1.2		150 LG
2.20	12-003-03-02-016-2	CHANNEL C100x40	350WA	1	1.2		150 LG
2.21	1200	IMPACT 3 ROLL IDLER 35"	A.P.S.S.	6	39.8	N/A	N/A
2.22	1200	3 ROLL IDLER 35"	A.P.S.S.	6	43.7	N/A	N/A
2.23	1200 90 drop	FLAT RETURN IDLER SERIES 25	A.P.S.S.	4	12.89	N/A	N/A

**GENERAL NOTES**

- ALL DIMENSIONS IN mm UNLESS STATED OTHERWISE
- COMPONENTS TO BE STAMPED WITH THEIR PART NO IN LETTERS AT LEAST 8mm HIGH
- PLATE THICKNESS & SECTIONS SIZES TO BE WITHIN NORMAL BS TOLERANCE U.O.S

**FABRICATION NOTES**

- ALL WELDING AND WELD PREPARATION TO BE IN ACCORDANCE WITH SANS 2001:CS1 (AWS D1.1)
- WELDING SYMBOLS ARE IN ACCORDANCE WITH BS EN 22553:1997
- ALL WELDS TO BE 6mm WELDS UNLESS OTHERWISE SPECIFIED
- ALL PROFILE SIZES ARE FINAL SIZES
- ALL PROFILE CUT EDGES TO BE DRESSED AND SHARP CORNERS REMOVED
- ALL HOLES TO BE DRILLED AND NOT FLAME CUT

**DO NOT SCALE - IF IN DOUBT ASK!**

APPROVED STAMP & SIGN

PR. ENG. NAME: \_\_\_\_\_

No: \_\_\_\_\_

DATE: \_\_\_\_\_

SIGN: \_\_\_\_\_

**Manhattan Corporation**

27m STOCKPILE CONVEYOR  
MID SECTION ( 1 ) 12m x 1200mm

12-003-03-02

SHEET 1 OF 6



**YOUR BUSINESS PARTNER IN MINING AND PROCESS SOLUTIONS**



# Conveyor Projects Ref:83840

Throughput: 400 tph

- 1050mm wide Feeder Conveyor system
- Structure Length: 14m
- 9.5 cubic meter capacity feed bin
- Wheel mount, towable system
- Motor: 15kW single drive
- Belt Speed: 1.3m/s
- Maximum lump size: 300mm



**YOUR BUSINESS PARTNER** IN MINING AND PROCESS SOLUTIONS



# Conveyor Projects Ref:59633

- Capacity 300 tph
- Conveyor 1; 16m long stringer conveyor with receiver chute at tail end, heavy duty to cater for 300mm rocks.
- Belt width of 900mm @ 2.5m/sec (client request) capable of 100 tph, fitted with discharge chute to transfer material onto conveyor 2.
- Conveyor 2; 21m long stringer conveyor with receiver chute at tail end, Belt width of 900mm @ 2.5m/sec (client request) capable of 100 tph, fitted with pneumatically operated Y-Chute.



**YOUR BUSINESS PARTNER** IN MINING AND PROCESS SOLUTIONS



# Conveyor Projects Ref:58125

- Capacity 100 tph

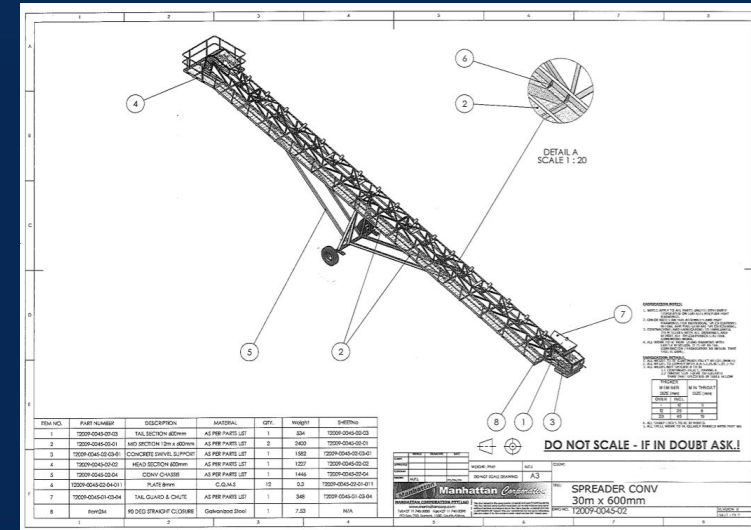
## Grasshopper Conveyor

- 10 units: 13m long x 600mm wide
- Belt speed: 1m/s



## Spreader Conveyor

- 30m long x 600mm wide
- The drive unit is a 7.5kW integral motor/gearbox mounted on the shaft of the head pulley.
- Belt speed: 1 m/s



**YOUR BUSINESS PARTNER** IN MINING AND PROCESS SOLUTIONS



# Conveyor Projects Ref:58662

## 1500mm x 30m Conveyor

- 75kW motor
- Belt speed: 1.586m/s
- Belt width: 1500mm

## 1500mm x 60m

- 110kW motor
- Belt speed: 1.491m/s
- Belt width: 1500mm

## 1200mm x 62m Conveyor

- 30kW motor
- Belt Speed: 1.539m/s
- Belt width: 1200mm

## 1500mm x 26m

- 37kW motor
- Belt speed: 1.342m/s
- Belt width: 1500mm

## 1200mm x 60m

- 55kW motor
- Belt Speed: 1.535m/s
- Belt width: 1200mm

## 1200mm x 20m

- 30kW motor
- Belt speed: 1.839m/s
- Belt width: 1200mm



**YOUR BUSINESS PARTNER** IN MINING AND PROCESS SOLUTIONS



# Conveyor Projects Ref:60176

- Extended main conveyor and supplied:-
- 3x Off grasshopper type conveyors 750mm wide by 20m long and
- 1x Off stacker conveyor 750mm

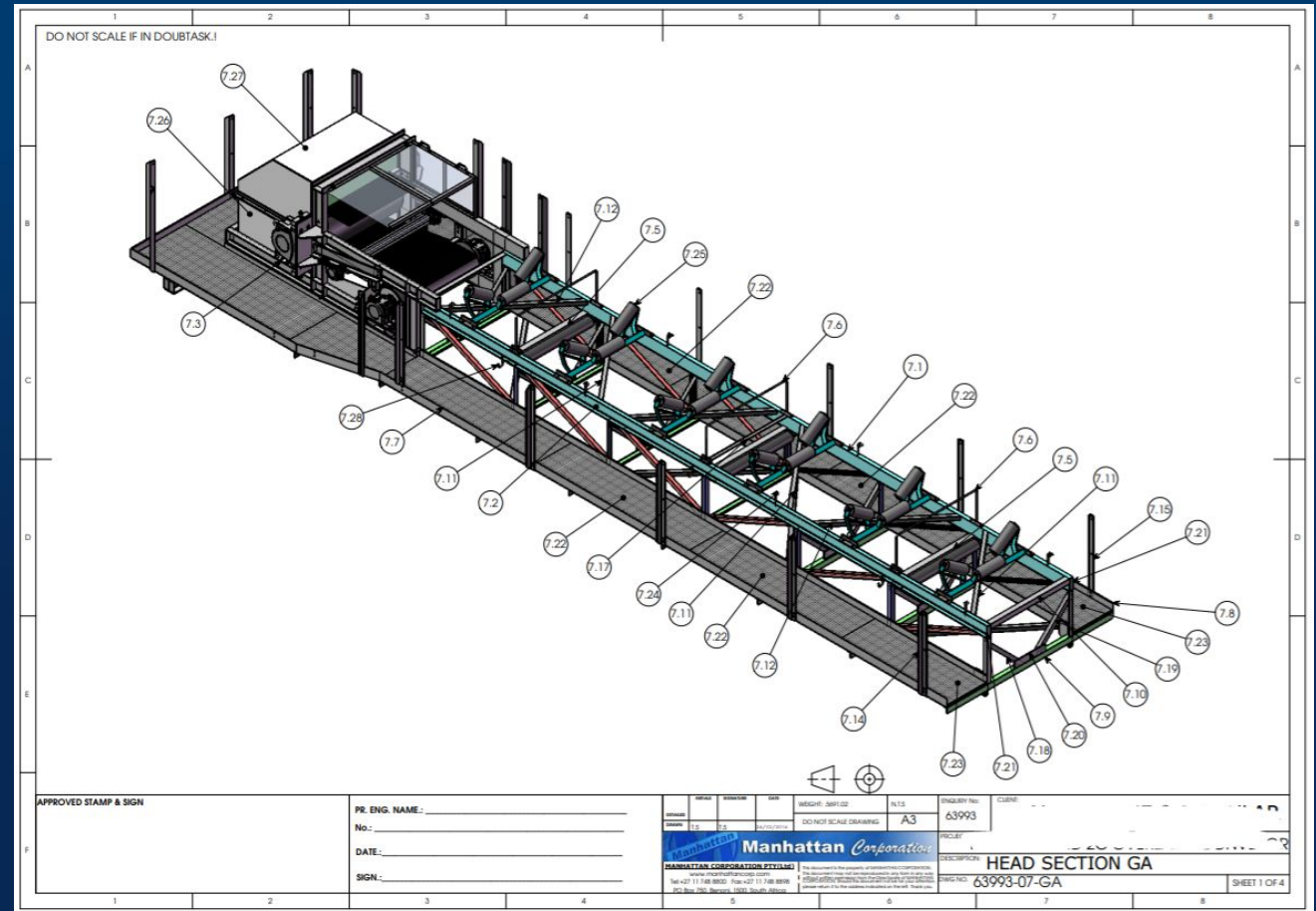
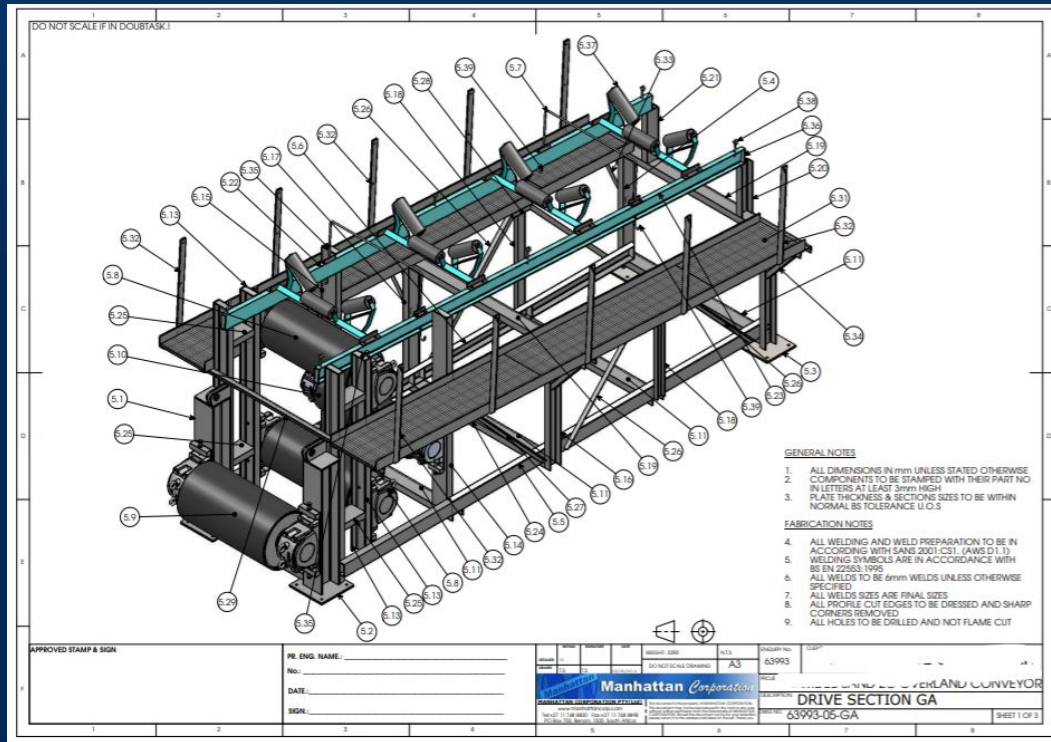


**YOUR BUSINESS PARTNER** IN MINING AND PROCESS SOLUTIONS



# Conveyor Projects Ref:63993

- The design, manufacture and supply of a 1500m long x 1500mm wide Overland Conveyor.



YOUR BUSINESS PARTNER IN MINING AND PROCESS SOLUTIONS

# CONTACT DETAILS

Manhattan Corporation Group

Tel: +27 (0)11 748 8800

Fax: +27 (0)11 748 8898

Mobile/ Whats App: +27 60 997 4509

Email: [Sales@manhattancorp.com](mailto:Sales@manhattancorp.com)



Social Media: @ManhattanProEng

<https://twitter.com/ManhattanProEng>

<https://facebook.com/ManhattanProEng>

<https://instagram.com/ManhattanProEng>

**[www.ManhattanCorp.com](http://www.ManhattanCorp.com)**  
*Turnkey Plants and Process Solutions*

**YOUR BUSINESS PARTNER** IN MINING AND PROCESS SOLUTIONS

**[www.ManhattanCorp.com](http://www.ManhattanCorp.com)**